

metabo®

Warranty Statement

Warranty can only be acknowledged by Metabo UK Ltd or an authorised Metabo warranty agent after a full inspection of the deemed faulty unit has been completed.

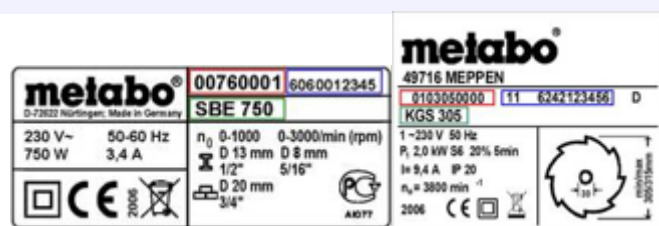
Metabo offer a 12 month warranty on handheld, half stationary and stationary power tools. Metabo are the only manufacturer to offer warranty on the products batteries, charger and chucks.

1 YEAR Full Warranty

If your Metabo product appears to be defective due to faulty materials or workmanship within 12 months from the date of purchase, Metabo guarantees to replace all defective parts free of charge – or at our discretion – replace the unit free of charge provided that:

- Proof of purchase is produced
- The product has not been misused
- The product has been subject to fair wear and tear
- Repairs have not been attempted by unauthorised persons

In order to make a claim, you will need to submit an original proof of purchase invoice to the seller or an authorised Metabo repair agent, and the product rating plate must display both the product serial number & CE mark, as shown below:



3 YEAR XXL Warranty

By registering your product online via www.metabo.co.uk within 4 weeks of purchase you may extend your warranty cover to 3 years free of charge. On completion of your registration you will be issued with a printable / downloadable XXL Registration certificate. If following registration your Metabo product appears to be defective due to faulty materials or workmanship within 36 months from the date of purchase, Metabo guarantees to replace all defective parts free of charge – or at our discretion – replace the unit free of charge provided that:

- Proof of purchase is produced
- A valid XXL Registration Certificate is produced
- The product has not been misused
- The product has been subject to fair wear and tear
- Repairs have not been attempted by unauthorised persons

In order to make a claim, you will need to submit an original proof of purchase invoice and the XXL certificate to the seller or an authorised Metabo repair agent, and the product rating plate must display both the product serial number & CE mark as shown above

In all cases products must be returned to Metabo via the original retailer or an authorised Metabo repair agent unless authorised by Metabo UK Limited. Products may not be returned without prior approval by Metabo which in turn will provide a 'Returns Reference Number' in advance for inclusion with the proof of purchase documents.

Metabo UK Limited will not replace or credit goods until they have been collected and evaluated by our Service Department. All products are subject to the Sales of Goods Act 1979 and as such it remains the responsibility of the retailer to service the consumer, not the manufacturer. Products returned incomplete will not be credited in full. A repair quotation will be provided for any returned product deemed to be outside of warranty conditions – A collection charge will be applied. All warranties are void for UK execution product sold outside of the UK.